



INTERMEDIATE

NOTE: good grasp on sewing, experience with patterns and sewing terms are needed to complete this design.

CozyWear Lounge Set

Sled, ski, skate, play in cold wintery weather — then relax as you put on this super comfy extra cozy lounge set!

SIZE:

This pattern is custom designed to fit Lammily dolls.



FREE SAMPLE

Download complete set at
www.lammily.com

CozyWear patterns designed by Chelly Wood

- Print out pattern pieces on 8.5" X 11" (letter size) paper. Make sure to print at actual size (100%). Check the 1" reference lines on the pattern pages against a ruler, to ensure you have printed them out at the proper scale.
- Separate the pattern pieces, cutting them out on the solid perimeter lines. Patterns that are larger than letter size paper will be printed on multiple pages and need to be assembled. Line up segmented pieces and tape them together.
- Lay out pieces on fabric, making sure to line up the pattern pieces parallel to the grainline (arrow on pattern pieces). Pin down pieces and cut them out of fabric.



View A



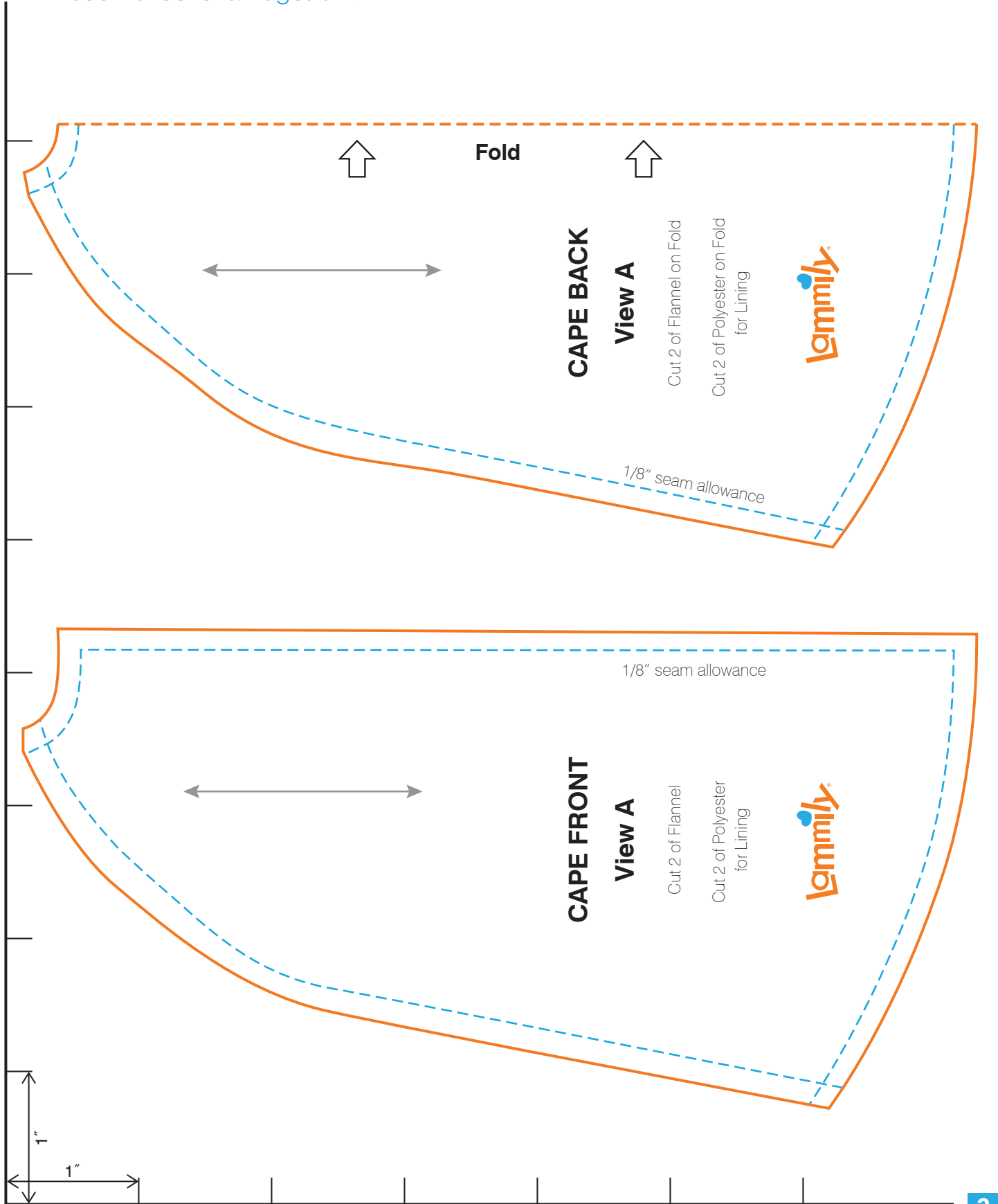
View B



View C

CozyWear Snowflake Cape Pattern

See Instructions: Pages 6 - 7



CozyWear Snowflake Cape Instructions

1. Print and cut out **Snowflake Cape Pattern**. Use this pattern to guide you, as you cut out the fabric you'll need. You should have all the pieces shown here, with three pieces cut from decorative flannel and three cut from polyester material for the lining.



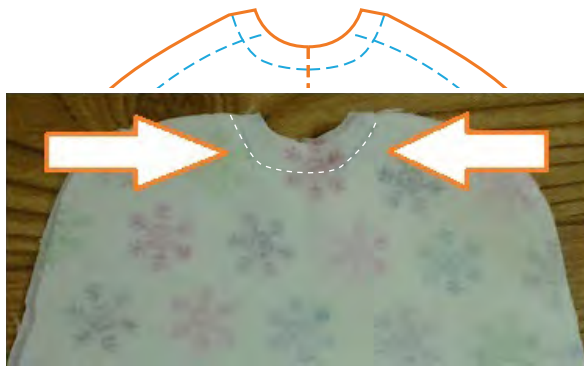
2. Sew fringe to the bottom of the largest flannel piece (the cape's back).



3. Attach the lining to the flannel back, sewing along the same seamline used to attach the fringe. Keep right sides together.



4. Sew the flannel back to the lining back along the collar. Use your pattern as a guide.



5. Clip the seams. (Cut towards each seam without cutting through the seams. This allows extra give when inverting the pieces.)



Here is how seams should look, once they've been clipped:



6. Invert the back section (flip it right-sides-out) and press your seams with an iron. Set this piece aside for a moment.



7. Sew fringe to the bottom of both front pieces.



CozyWear Snowflake Cape Instructions continued

- 8.** Lay the lining over the top of the cape front. (It helps to pin the fringe inside.)



Sew from arrow A, following the neckline, down the front closure and along the hem, to Arrow B.

- 10.** Clip these seams, just like you did with the cape's back.



- 11.** Invert cape's front (turn it right-sides-out). Do this with both fronts. Now you should have three pieces:



- 12.** Lay one front on top of the back, right sides together.



- 13.** Sew from collar to hem, attaching front to back. Do the same with the other front piece.



- 14.**



Press all seams and attach a snap for the front closure.